

Doors of Knowledge

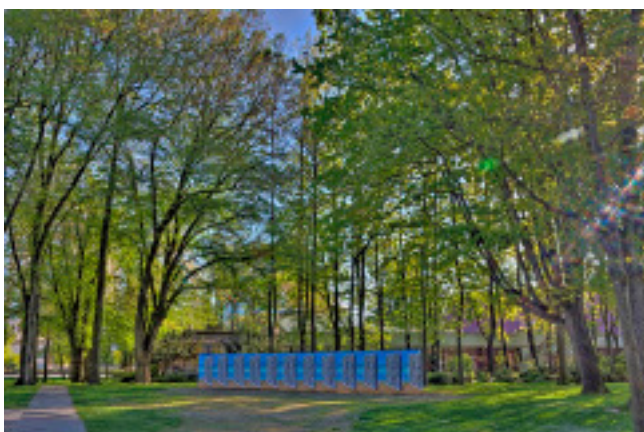
Patrick Hughes (London, UK)

WHO MADE THIS SCULPTURE? Patrick Hughes lives and works in London. Widely recognized as one of the major painters of contemporary British art, he is also a designer, teacher and writer. He has been active in the British art scene since the early 1960's and his three-dimensional "reverse perspective" works are represented in major public collections including the British Library and the Tate Gallery, London; the Gallery of Modern Art, Glasgow; The Deutsche Bibliothek, Frankfurt and the Denver Art Museum. Hughes has exhibited in London and throughout Europe, South East Asia, America and Canada.

Books by Patrick Hughes include *Vicious Circles and Infinity*; *Upon the Pun: Dual Meaning in Words and Pictures* and *More on Oxymoron. Perverspective*, by John Slyce, is the most recent monograph published on the work of the artist.



1



2



3

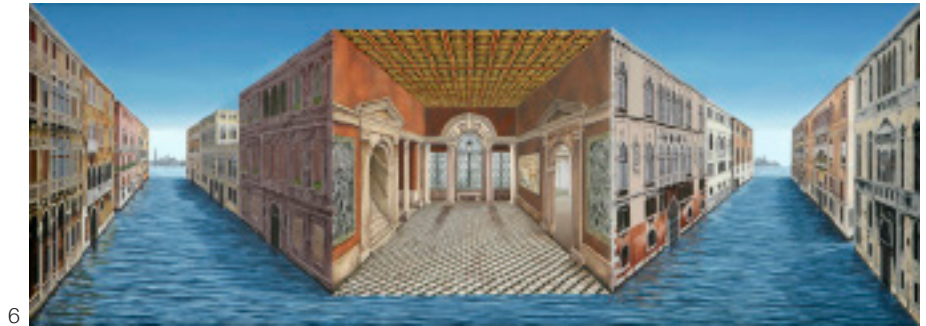


4

HOW WAS THIS SCULPTURE MADE? The immense work undertaken by Hughes consists of 24 wooden doors, each 7' x 3' bolted together to form a single zig-zag line and secured to the ground via concrete slabs. Original painted art work has been digitally enlarged and transferred onto the doors as a high-definition vinyl overlay. One side depicts a series of doors with distant landscape imagery, the other side a bank of bookshelves lines with images of real books. Due to the "reverse perspective" nature of the piece, the sculpture depends on physical interaction with the viewer. As a free standing piece, the ways in which viewers can approach and interact with the piece are infinite. Doors will swing open or shut, the landscape will be revealed or concealed, the book cases will appear to rotate in keeping with the viewer's movements creating a hypnotic effect. In an outdoor setting, painted and true landscapes will interact, while the detailed images of real books entice the viewer in for a closer look.



5



6



7

HOW DOES THIS WORK CONNECT WITH THIS ARTIST'S OTHER WORK? Doors of Knowledge provides Vancouver residents and visitors to experience Patrick Hughes's works on a scale never seen before. His work has enthralled British viewers for years, earning the artist a reputation of being one of the most inventive and unconventional artists working in the UK. His discovery and development of reverse perspective gave Hughes an even more potent mechanism for loosening the grip of experience on the viewer's imagination. It relies on the fact that the human brain and eye are adapted during early childhood to apprehend space in terms of linear perspective—converging parallel lines imply recession and distant objects appear smaller. Reverse perspective exploits and simultaneously denies this learned response. The brain will persist in decoding the information in the customary way even though it knows the information is wrong. Hughes also uses painted cast shadow to underpin the illusion, creating convincing synthetic environments that ensnare the eye. Now Vancouver has the incredible opportunity to host a monumental work by Hughes during the Vancouver Biennale.

TO LEARN MORE:

Visit the artist's studio at:
www.patrickhughes.co.uk/
 Patrick Hughes is represented in Canada
 by Winsor Gallery:
[www.winsorgallery.com/artists.
 php?artwork=hughes_14](http://www.winsorgallery.com/artists.php?artwork=hughes_14)

WHO PUT THIS SCULPTURE ON DISPLAY IN RICHMOND? This sculpture is part of Vancouver Biennale 2009-2011 Exhibition. The Vancouver Biennale is a non-profit charitable organization that celebrates art in public space. Each exhibition transforms the urban landscape into an Open Air Museum, creating globally inspired cultural experiences where people live, work, play and transit. The Biennale features internationally renowned and emerging Contemporary artists that represent a diversity of cultural perspectives and artistic disciplines including sculpture, new media, performance works and film. The objective is to use great art as a catalyst to transformative learning and social action.

The Vancouver Biennale also creates supporting public programs, events and publications including the award-winning BIG IDEAS Education program, the International Artist Residency Program inspired by Martin Luther King's "I Have a Dream", the CineFest LIVE documentary film festival and the Tour de Biennale and BIKennale arts & culture cycling events.

TO LEARN MORE you can search the terms **BIENNALE**, **PUBLIC ART** or **OUTDOOR SCULPTURE PARKS** on-line. Also Visit the Vancouver Biennale website at www.vancouverbiennale.com

IMAGE CREDITS:

- 1 Artist portrait; Artist studio
- 2 *Doors of Knowledge*; Dan Fairchild
- 3 *Doors of Knowledge*; Dan Fairchild
- 4 *Brillancy*; Artist studio
- 5 *Cloudy*; Artist studio
- 6 *Internity*; Artist studio
- 7 *Warholiday*; Artist studio

Author: Winsor Gallery
Editor: Katherine Tong
Designer: Julie Rudd